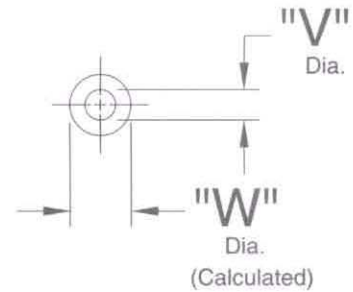
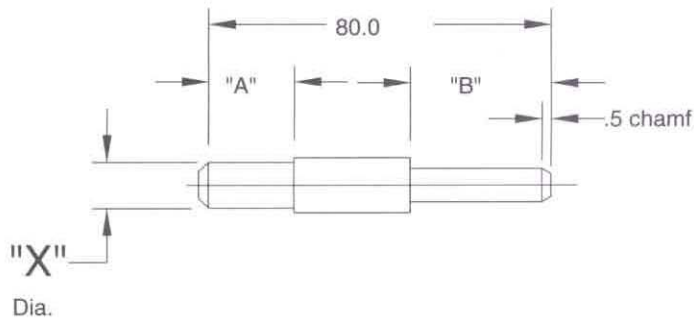


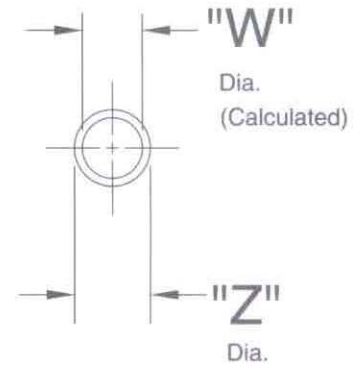
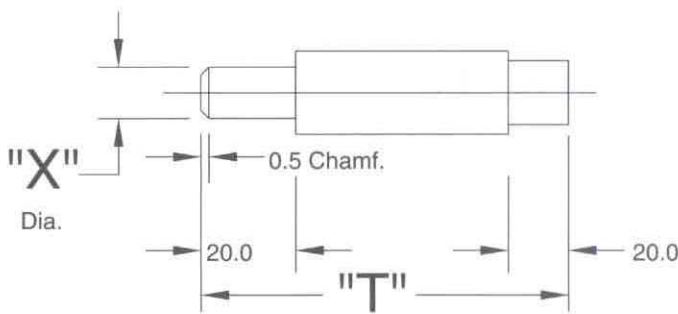
# Style "K" & "L" Straight Loc. Pin



## STRAIGHT LOCATING MEMBER

GAGE IDENTIFICATION (With Pilot Lead) **"K"**

NOM. DIA.	"A"	"B"
04.00-10.50	20MM	20MM
11.00-25.50	20MM	35MM

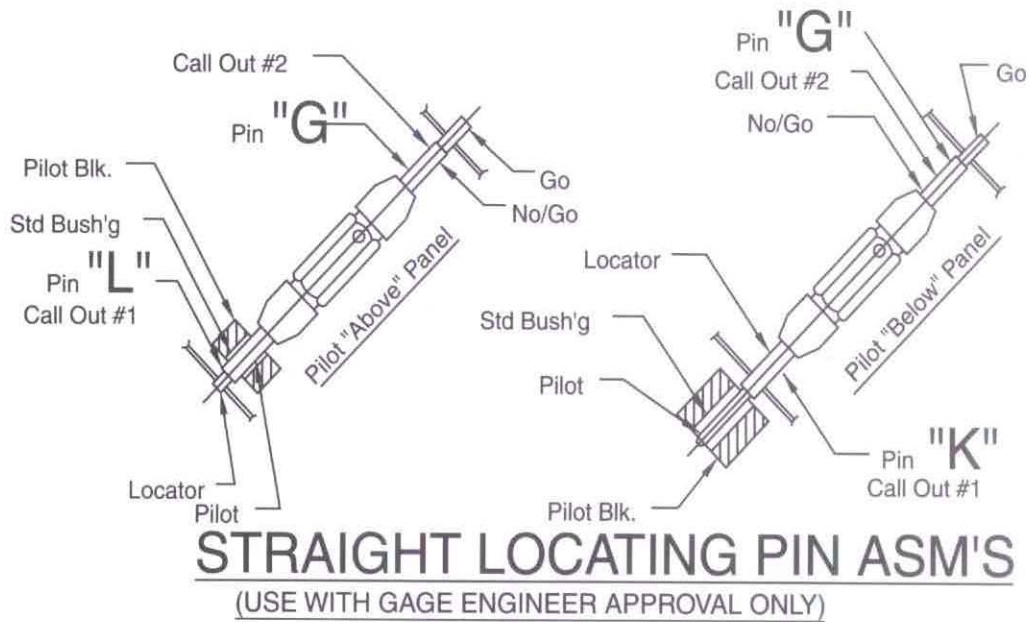


## STRAIGHT LOCATING MEMBER

GAGE IDENTIFICATION (With Pilot Shaft): **"L"**

NOM. DIA.	"T"
04.00-17.50	80MM
18.00-22.50	100MM
23.00-27.50	110MM
28.00-40.50	125MM
41.00-50.50	140MM

# Style "K" & "L" Straight Loc. Pin



ADDITIONAL STYLE MEMBER'S, FOR CALL OUT #2, ARE AVAILABLE UPON REQUEST  
CONSULT FACTORY.

## PIN ORDERING EXAMPLES

EXAMPLES HOLE SIZE: 9.00mm HOLE +0.03/-0.15

EXAMPLES LOCATION TOL:  $\oplus 1.5 \text{ (S) A B C}$

ORDER EXAMPLE FOR DOUBLE ENDED PIN ASSEMBLIES, STYLES "K" "L" WITH "G" MEMBER

PIN# "L" STANDARD PIN			
LOC.	<input checked="" type="checkbox"/>	MMC	<input type="checkbox"/>
GO/NO-GO	<input type="checkbox"/>	NO-GO	<input type="checkbox"/>
HOLE SIZE			9.00
LOCATION TOL.			-0.00
HOLE SIZE TOL.			-0.15
NOM. CALCULATED PIN SIZE			8.85
ORDER#	N	09.00 L2	08.85
BUSHING CALL OUT		P64-1 6-	15.00



PIN# "K" STANDARD PIN			
LOC.	<input checked="" type="checkbox"/>	MMC	<input type="checkbox"/>
GO/NO-GO	<input type="checkbox"/>	NO-GO	<input type="checkbox"/>
HOLE SIZE			9.00
LOCATION TOL.			-0.00
HOLE SIZE TOL.			-0.15
NOM. CALCULATED PIN SIZE			8.85
ORDER#	N	09.00 K2	08.85
BUSHING CALL OUT		P20-12-	4.00



COMPLETE DOUBLE ENDED CALL OUT:  
N 09.00 L2 08.85 / R09.03 G 08.85

COMPLETE DOUBLE ENDED CALL OUT:  
N 09.00 K2 08.85 / R09.03 G 08.85

SEE PAGES 20, 21, 22, 23 & 24 FOR STANDARD SIZE LISTING