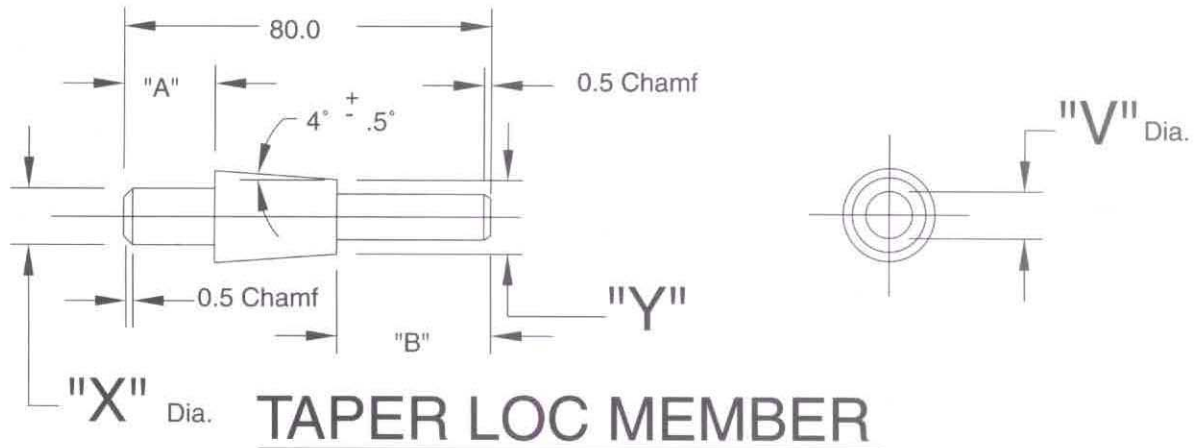


Style "C" (Taper Loc.) & "G" (Go/No-Go) Pin

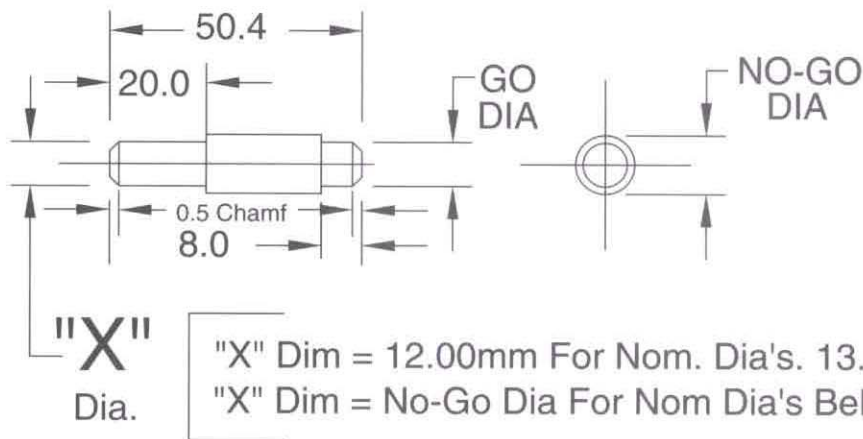


TAPER LOC MEMBER

GAGE IDENTIFICATION "C"

NOM. DIA.	"A"	"B"
04.00-10.50	20MM	20MM
11.00-25.50	20MM	35MM

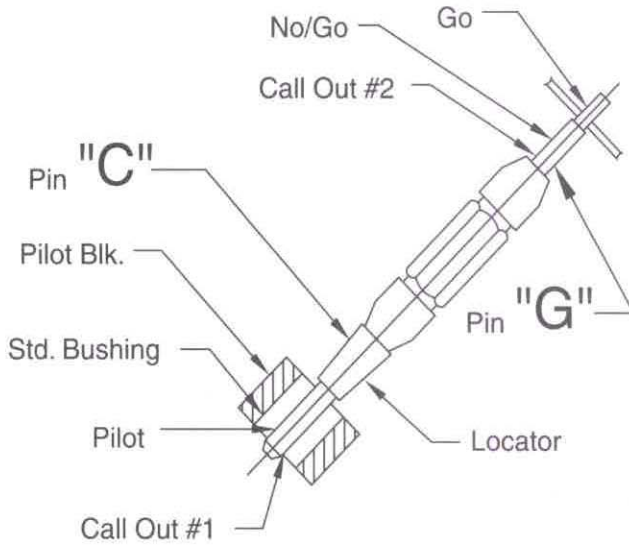
SEE PAGE 17 FOR STANDARD SIZE LISTING



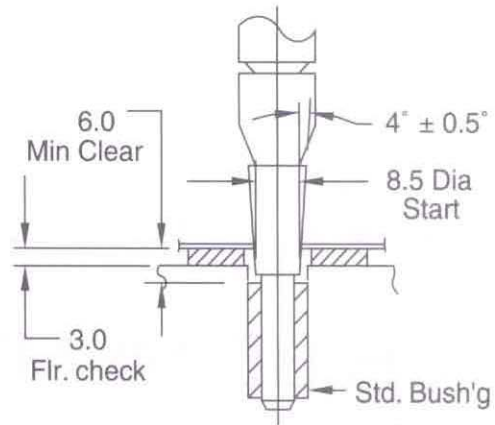
GO/NO-GO MEMBER

GAGE IDENTIFICATION: "G"

Style "C" (Taper Loc.) & "G" (Go/No-Go) Pin



Note:
Taper Pins Are
Ordered @ Nom. Hole
Size. 9.0mm Shown Below



Example:
For Proper Engagement
of Taper Pin Asm.

TAPER PIN/ GO/NO-GO PIN ASM

PIN ORDERING EXAMPLES

EXAMPLES HOLE SIZE: 9.00mm HOLE +0.03/-0.15

EXAMPLES LOCATION TOL: $\Phi 1.5 \text{ (S) A B C}$

ORDER EXAMPLE FOR DOUBLE ENDED PIN ASSEMBLY, STYLE "C" WITH "G" MEMBER

PIN# "C" STANDARD PIN			
LOC. <input checked="" type="checkbox"/>	MMC <input type="checkbox"/>	SCRIBE <input type="checkbox"/>	
GO/NO-GO <input type="checkbox"/>	NO-GO <input type="checkbox"/>	GO <input type="checkbox"/>	
HOLE SIZE		9.00	
LOCATION TOL.			
HOLE SIZE TOL.			
NOM. CALCULATED PIN SIZE		9.00	
ORDER#	N 09.00 C2 XX.XX		
BUSHING CALL OUT	P20-12-4.00		

PIN# "G" STANDARD PIN			
LOC. <input type="checkbox"/>	MMC <input type="checkbox"/>	SCRIBE <input type="checkbox"/>	
GO/NO-GO <input type="checkbox"/>	NO-GO <input type="checkbox"/>	GO <input type="checkbox"/>	
HOLE SIZE	9.00	9.00	
LOCATION TOL.	+0.00	+0.00	
HOLE SIZE TOL.	+0.03	-0.15	
NOM. CALCULATED PIN SIZE	9.03	8.85	
ORDER#	N 09.03 G	08.85	
BUSHING CALL OUT	N/A		

NEW DESIGNATION
Nominal Hole Dia.
Gage Member I.D.
SPECIAL SMALL END TAPER DIA.
(IF NEEDED)

NEW DESIGNATION
CALC. NO-GO DIA.
Gage Member I.D.
CALC. GO DIA.

COMPLETE CALL OUT: N 09.00 C2 / R 09.03 G 08.85

SEE PAGES 17 & 20 FOR STANDARD SIZE LISTING