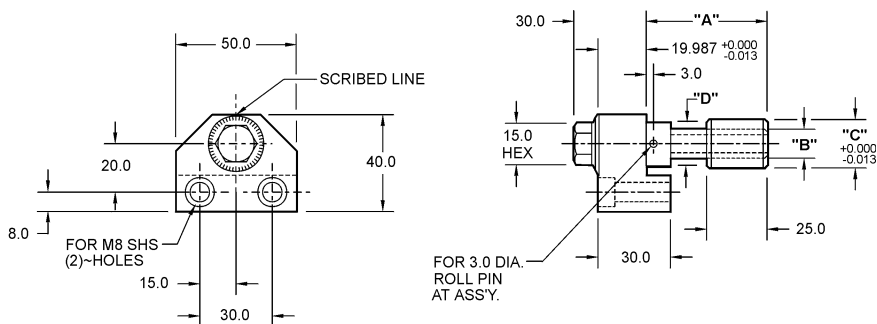


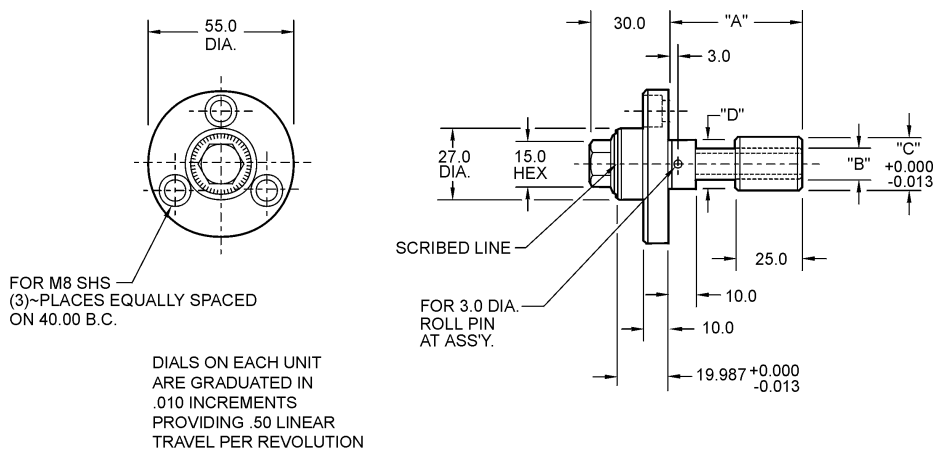
Metric "L" Mount Micro Adjustment Dial



DIALS ON EACH UNIT ARE GRADUATED IN .010 INCREMENTS PROVIDING .50 LINEAR TRAVEL PER REVOLUTION

CAD FILE NAME	PART NUMBER	"A"	"B"	"C"	"D"
EM1205L	EM1205-L-50.0	50.0	M12 x 0.5	19.987	18.50
	EM1205-L-75.0	75.0	M12 x 0.5	19.987	18.50
	EM1205-L-120.0	120.0	M12 x 0.5	19.987	18.50
EM1005L	EM1005-L-50.0	50.0	M10 x 0.5	15.987	15.50
	EM1005-L-75.0	75.0	M10 x 0.5	15.987	15.50
	EM1005-L-120.0	120.0	M10 x 0.5	15.987	15.50

Metric Round Mount Micro Adjustment Dial

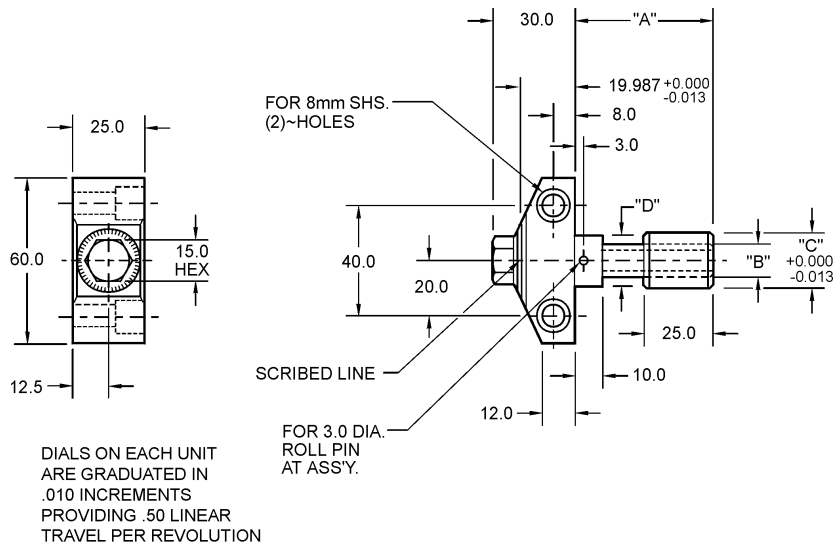


DIALS ON EACH UNIT ARE GRADUATED IN .010 INCREMENTS PROVIDING .50 LINEAR TRAVEL PER REVOLUTION

CAD FILE NAME	PART NUMBER	"A"	"B"	"C"	"D"
EM1205RD	EM1205-RD-50.0	50.0	M12 x 0.5	19.987	18.50
	EM1205-RD-75.0	75.0	M12 x 0.5	19.987	18.50
	EM1205-RD-120.0	120.0	M12 x 0.5	19.987	18.50
EM1005RD	EM1005-RD-50.0	50.0	M10 x 0.5	15.987	15.50
	EM1005-RD-75.0	75.0	M10 x 0.5	15.987	15.50
	EM1005-RD-120.0	120.0	M10 x 0.5	15.987	15.50

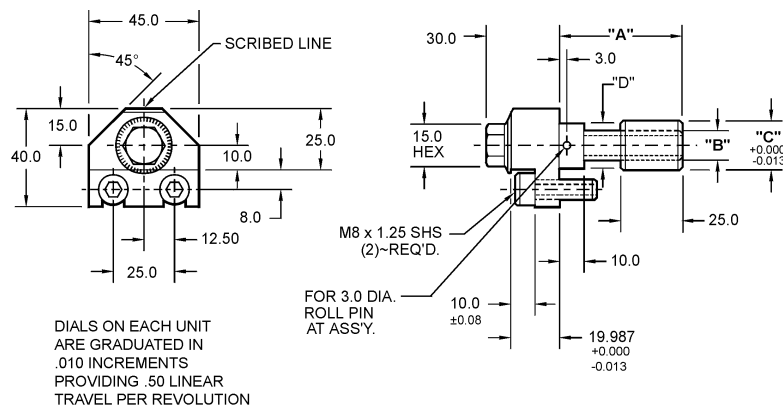
"Stretch"
The shortest standard component is given. You may "Stretch" the unit to the desired length.

Metric Micro Adjustment Dial Side Mount



CAD FILE NAME	PART NUMBER	"A"	"B"	"C"	"D"
EM1205S	EM1205-S-50.0	50.0	M12 x 0.5	19.987	18.50
	EM1205-S-75.0	75.0	M12 x 0.5	19.987	18.50
	EM1205-S-120.0	120.0	M12 x 0.5	19.987	18.50
EM1005S	EM1005-S-50.0	50.0	M10 x 0.5	15.987	15.50
	EM1005-S-75.0	75.0	M10 x 0.5	15.987	15.50
	EM1005-S-120.0	120.0	M10 x 0.5	15.987	15.50

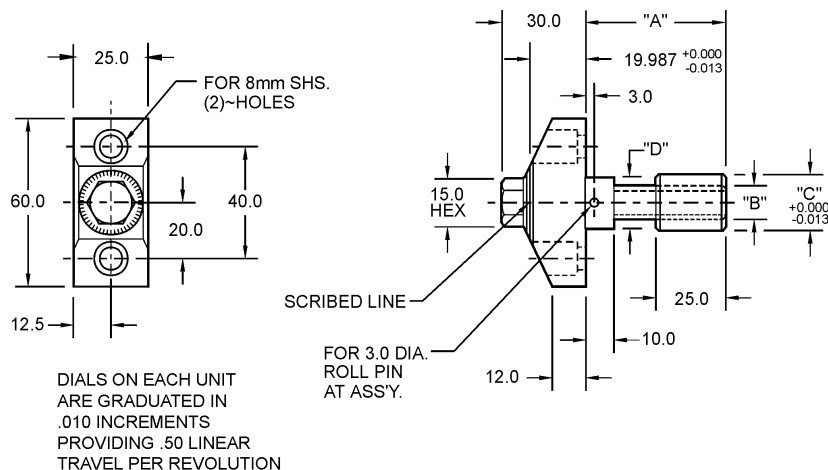
Metric Mount Micro Adjustment Dial New Britain



CAD FILE NAME	PART NUMBER	"A"	"B"	"C"	"D"
EM1205NB	EM1205-NB-50.0	50.0	M12 x 0.5	19.987	18.50
	EM1205-NB-75.0	75.0	M12 x 0.5	19.987	18.50
	EM1205-NB-120.0	120.0	M12 x 0.5	19.987	18.50
EM1005NB	EM1005-NB-50.0	50.0	M10 x 0.5	15.987	15.50
	EM1005-NB-75.0	75.0	M10 x 0.5	15.987	15.50
	EM1005-NB-120.0	120.0	M10 x 0.5	15.987	15.50

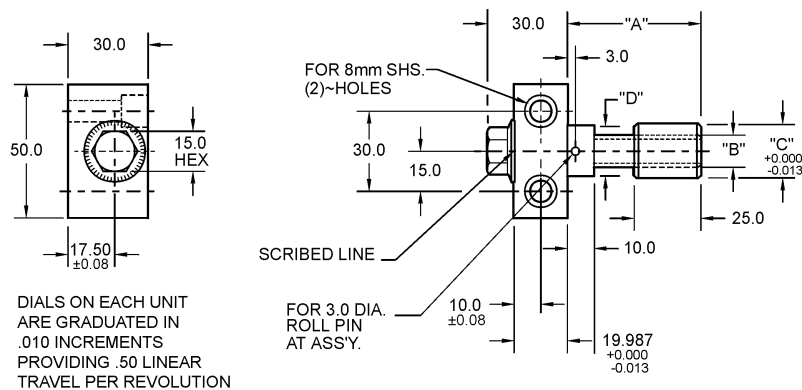
“Stretch”
The shortest standard component is given. You may “Stretch” the unit to the desired length.

Metric Micro Adjustment Dial "R" Mount



CAD FILE NAME	PART NUMBER	"A"	"B"	"C"	"D"
EM1205R	EM1205-R-50.0	50.0	M12 x 0.5	19.987	18.50
	EM1205-R-75.0	75.0	M12 x 0.5	19.987	18.50
	EM1205-R-120.0	120.0	M12 x 0.5	19.987	18.50
EM1005R	EM1005-R-50.0	50.0	M10 x 0.5	15.987	15.50
	EM1005-R-75.0	75.0	M10 x 0.5	15.987	15.50
	EM1005-R-120.0	120.0	M10 x 0.5	15.987	15.50

Metric Micro Adjustment Dial "T" Mount



CAD FILE NAME	PART NUMBER	"A"	"B"	"C"	"D"
EM1205T	EM1205-T-50.0	50.0	M12 x 0.5	19.987	18.50
	EM1205-T-75.0	75.0	M12 x 0.5	19.987	18.50
	EM1205-T-120.0	120.0	M12 x 0.5	19.987	18.50
EM1005T	EM1005-T-50.0	50.0	M10 x 0.5	15.987	15.50
	EM1005-T-75.0	75.0	M10 x 0.5	15.987	15.50
	EM1005-T-120.0	120.0	M10 x 0.5	15.987	15.50

"Stretch"

The shortest standard component is given. You may "Stretch" the unit to the desired length.