

# Metric Couplers

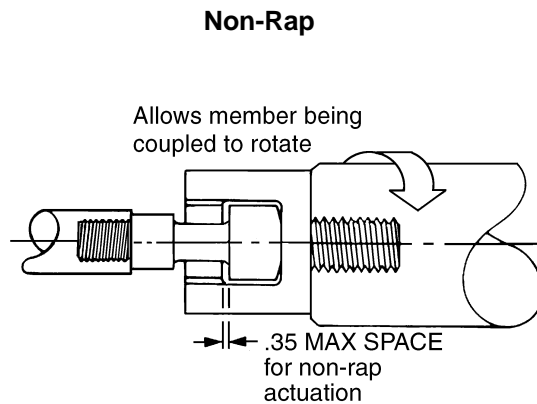
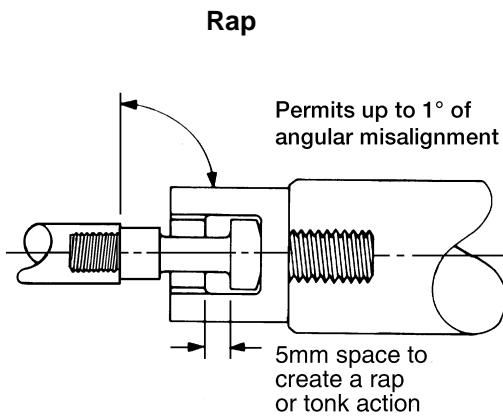


## Features:

- 4140 Material
- Choice of Types
- Variety of Sizes
- Male or Female Threads
- Corresponding Adapters
- Black Oxide Finish



## Types



E&E Metric Couplers are designed for use with our standard metric Adapters or comparable details. They are offered in thread sizes common to a range of standard metric cylinders. Rod ends compensate for angular misalignment and allow coupled member to rotate in both Rap and Non-Rap applications.

All dimensions are in mm

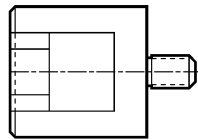
# Metric Coupler Selection Chart



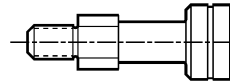
SCREW MOUNT



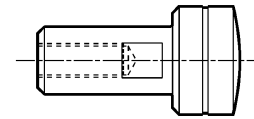
THREAD MOUNT



MALE THREAD



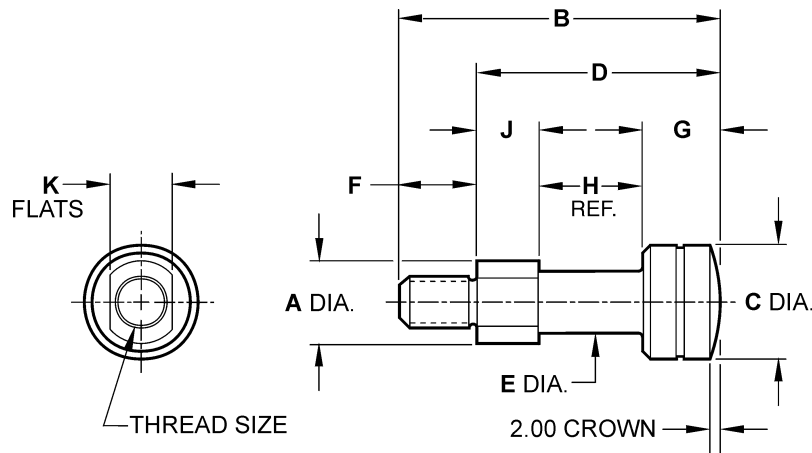
FEMALE THREAD



Metric

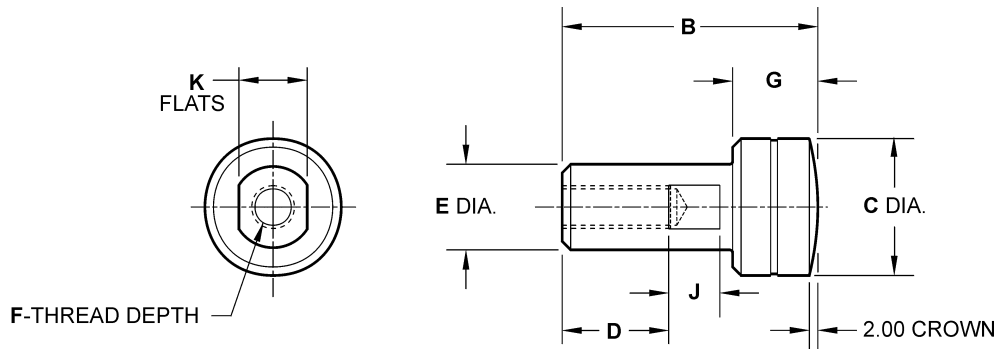
ADAPTER		COUPLER			
SCREW MOUNT	THREAD MOUNT	MALE THREAD		FEMALE THREAD	
		RAP	NON-RAP	RAP	NON-RAP
		EHM148	EHM151/EHM151A/EHM151B	EHM154/EHM154A/EHM154B	EHM155/EHM155A/EHM155B
EHM149	EHM152/EHM152A/EHM152B/EHM152C	EHM156/EHM156A/EHM156B/EHM156C	EHM157/EHM157A/EHM157B/EHM157C	EHM160/EHM160A/EHM160B	EHM161/EHM161A/EHM161B
EHM150	EHM153/EHM153A	EHM158/EHM158A/EHM158B	EHM159/EHM159A/EHM159B	EHM162/EHM162A	EHM163/EHM163A
EHM173	EHM174/EHM174A	EHM168/EHM168A	EHM167/EHM167A	EHM179/EHM179A	EHM164/EHM164A
EHM175	EHM176	EHM170	EHM169	EHM180/EHM180A	EHM165/EHM165A
EHM177	EHM178	EHM172	EHM171	EHM181	EHM166

# Metric Coupler (Male Thread)



CAD FILE NUMBER	PART NUMBER	TYPE	THREAD	A	B	C	D	E	F	G	H	J	K
EHM154	EHM-154A	RAP	M10 x 1.25 MALE	16.0	62.0	22.0	47.0	12.0	15.0	15.00	20.0	12.0	12.0
EHM155	EHM-155A	NON-RAP	M10 x 1.25 MALE	16.0	62.0	22.0	47.0	12.0	15.0	19.80	15.2	12.0	12.0
EHM154	EHM-154	RAP	M10 x 1.5 MALE	16.0	62.0	22.0	47.0	12.0	15.0	15.00	20.0	12.0	12.0
EHM155	EHM-155	NON-RAP	M10 x 1.5 MALE	16.0	62.0	22.0	47.0	12.0	15.0	19.80	15.2	12.0	12.0
EHM154B	EHM-154B	RAP	M12 x 1.25 MALE	16.0	65.0	22.0	47.0	12.0	18.0	15.00	20.0	12.0	12.0
EHM155B	EHM-155B	NON-RAP	M12 x 1.25 MALE	16.0	65.0	22.0	47.0	12.0	18.0	19.80	15.2	12.0	12.0
EHM156C	EHM-156C	RAP	M14 x 1.5 MALE	25.0	80.0	32.0	60.0	20.0	20.0	20.00	28.0	12.0	22.0
EHM157C	EHM-157C	NON-RAP	M14 x 1.5 MALE	25.0	80.0	32.0	60.0	20.0	20.0	24.80	23.2	12.0	22.0
EHM156A	EHM-156A	RAP	M16 x 1.5 MALE	25.0	80.0	32.0	60.0	20.0	20.0	20.00	28.0	12.0	22.0
EHM157A	EHM-157A	NON-RAP	M16 x 1.5 MALE	25.0	80.0	32.0	60.0	20.0	20.0	24.80	23.2	12.0	22.0
EHM156B	EHM-156B	RAP	M18 x 1.5 MALE	25.0	85.0	32.0	60.0	20.0	25.0	20.00	28.0	12.0	22.0
EHM157B	EHM-157B	NON-RAP	M18 x 1.5 MALE	25.0	85.0	32.0	60.0	20.0	25.0	24.80	23.2	12.0	22.0
EHM156	EHM-156	RAP	M20 x 1.5 MALE	25.0	85.0	32.0	60.0	20.0	25.0	20.00	28.0	12.0	22.0
EHM157	EHM-157	NON-RAP	M20 x 1.5 MALE	25.0	85.0	32.0	60.0	20.0	25.0	24.80	23.2	12.0	22.0
EHM158B	EHM-158B	RAP	M24 x 2 MALE	32.0	105.0	40.0	70.0	25.0	35.0	25.00	30.0	15.0	28.0
EHM159B	EHM-159B	NON-RAP	M24 x 2 MALE	32.0	105.0	40.0	70.0	25.0	35.0	29.80	25.2	15.0	28.0
EHM158	EHM-158	RAP	M26 x 1.5 MALE	32.0	105.0	40.0	70.0	25.0	35.0	25.00	30.0	15.0	28.0
EHM159	EHM-159	NON-RAP	M26 x 1.5 MALE	32.0	105.0	40.0	70.0	25.0	35.0	29.80	25.2	15.0	28.0
EHM158A	EHM-158A	RAP	M27 x 2 MALE	32.0	105.0	40.0	70.0	25.0	35.0	25.00	30.0	15.0	28.0
EHM159A	EHM-159A	NON-RAP	M27 x 2 MALE	32.0	105.0	40.0	70.0	25.0	35.0	29.80	25.2	15.0	28.0
EHM168A	EHM-168A	RAP	M30 x 2 MALE	45.0	120.0	55.0	80.0	35.0	40.0	25.00	40.0	15.0	40.0
EHM167A	EHM-167A	NON-RAP	M30 x 2 MALE	45.0	120.0	55.0	80.0	35.0	40.0	29.80	35.2	15.0	40.0
EHM168	EHM-168	RAP	M33 x 2 MALE	45.0	125.0	55.0	80.0	35.0	45.0	25.00	40.0	15.0	40.0
EHM167	EHM-167	NON-RAP	M33 x 2 MALE	45.0	125.0	55.0	80.0	35.0	45.0	29.80	35.2	15.0	40.0
EHM170	EHM-170	RAP	M42 x 2 MALE	50.0	145.0	63.0	90.0	45.0	55.0	30.00	45.0	15.0	45.0
EHM169	EHM-169	NON-RAP	M42 x 2 MALE	50.0	145.0	63.0	90.0	45.0	55.0	34.80	40.2	15.0	45.0
EHM172	EHM-172	RAP	M48 x 2 MALE	60.0	155.0	70.0	95.0	50.0	60.0	35.00	45.0	15.0	55.0
EHM171	EHM-171	NON-RAP	M48 x 2 MALE	60.0	155.0	70.0	95.0	50.0	60.0	39.80	40.2	15.0	55.0

# Metric Coupler (Female Thread)



Metric

CAD FILE NUMBER	PART NUMBER	TYPE	THREAD	B	C	D	E	F	G	J	K
EHM160	<b>EHM-160A</b>	RAP	M10 x 1.25 FEMALE	60.0	32.0	25.0	20.0	25.0	20.00	12.0	16.0
EHM161	<b>EHM-161A</b>	NON-RAP	M10 x 1.25 FEMALE	65.0	32.0	25.0	20.0	25.0	24.80	12.0	16.0
EHM160	<b>EHM-160</b>	RAP	M10 x 1.5 FEMALE	60.0	32.0	25.0	20.0	20.0	20.00	12.0	16.0
EHM161	<b>EHM-161</b>	NON-RAP	M10 x 1.5 FEMALE	65.0	32.0	25.0	20.0	25.0	24.80	12.0	16.0
EHM160B	<b>EHM-160B</b>	RAP	M12 x 1.25 FEMALE	60.0	32.0	25.0	20.0	25.0	20.00	12.0	16.0
EHM161B	<b>EHM-161B</b>	NON-RAP	M12 x 1.25 FEMALE	65.0	32.0	25.0	20.0	25.0	24.80	12.0	16.0
EHM162	<b>EHM-162</b>	RAP	M14 x 1.5 FEMALE	70.0	40.0	25.0	25.0	32.0	25.00	14.0	22.0
EHM163	<b>EHM-163</b>	NON-RAP	M14 x 1.5 FEMALE	75.0	40.0	25.0	25.0	32.0	29.80	14.0	22.0
EHM162A	<b>EHM-162A</b>	RAP	M16 x 1.5 FEMALE	70.0	40.0	25.0	25.0	32.0	25.00	14.0	22.0
EHM163A	<b>EHM-163A</b>	NON-RAP	M16 x 1.5 FEMALE	75.0	40.0	25.0	25.0	32.0	29.80	14.0	22.0
EHM179A	<b>EHM-179A</b>	RAP	M20 x 1.5 FEMALE	100.0	55.0	45.0	35.0	40.0	25.00	15.0	32.0
EHM164A	<b>EHM-164A</b>	NON-RAP	M20 x 1.5 FEMALE	105.0	55.0	45.0	35.0	40.0	29.80	15.0	32.0
EHM179	<b>EHM-179</b>	RAP	M26 x 1.5 FEMALE	100.0	55.0	45.0	35.0	45.0	25.00	15.0	32.0
EHM164	<b>EHM-164</b>	NON-RAP	M26 x 1.5 FEMALE	105.0	55.0	45.0	35.0	45.0	29.80	15.0	32.0
EHM180A	<b>EHM-180A</b>	RAP	M27 x 2 FEMALE	115.0	63.0	65.0	45.0	55.0	30.00	14.0	38.0
EHM165A	<b>EHM-165A</b>	NON-RAP	M27 x 2 FEMALE	120.0	63.0	65.0	45.0	55.0	34.80	14.0	38.0
EHM180	<b>EHM-180</b>	RAP	M33 x 2 FEMALE	115.0	63.0	65.0	45.0	48.0	30.00	14.0	38.0
EHM165	<b>EHM-165</b>	NON-RAP	M33 x 2 FEMALE	120.0	63.0	65.0	45.0	48.0	34.80	14.0	38.0
EHM181	<b>EHM-181</b>	RAP	M36 x 2 FEMALE	125.0	70.0	70.0	50.0	75.0	35.00	14.0	45.0
EHM166	<b>EHM-166</b>	NON-RAP	M36 x 2 FEMALE	130.0	70.0	70.0	50.0	75.0	39.80	14.0	45.0