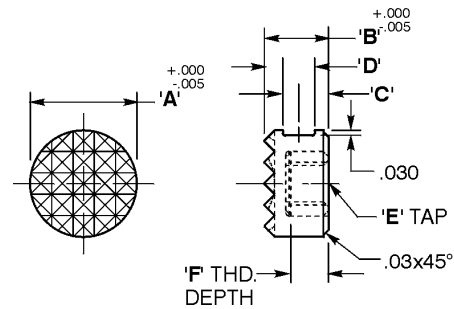
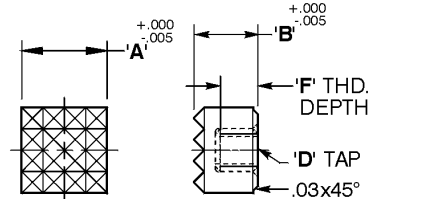
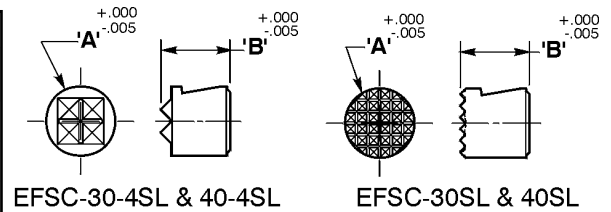
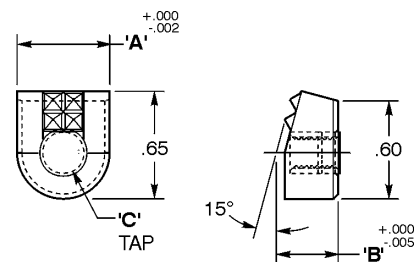


Grippers "EFSC" Solid Carbide

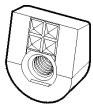
EFSC-ROUND								
CAD FILE NAME	PART NUMBER	A	B	C	D	E	F TAP	TOOTH PATTERN
EFSC30SL	EFSC-30-SL	5/16	3/8	-	-	-	-	EX-FINE
EFSC304SL	EFSC-30-4-SL	5/16	3/8	-	-	-	-	4-POINT
EFSC40SL	EFSC-40-SL	3/8	3/8	-	-	-	-	EX-FINE
EFSC404SL	EFSC-840-4-SL	3/8	3/8	-	-	-	-	4-POINT
EFSC841	EFSC-840	1/2	3/8	11/64	3/16	#10-32	3/16	FINE
EFSC8444	EFSC-844-4	1/2	1/2	15/64	3/16	#10-32	5/16	4-POINT
EFSC844	EFSC-844	1/2	1/2	15/64	3/16	#10-32	5/16	FINE
EFSC844SL	EFSC-844-SL	1/2	1/2	15/64	3/16	-	-	FINE
EFSC0704	EFSC-070-4	1/2	1/2	-	KEYWAY	#10-32	5/16	4-POINT
EFSC070	EFSC-070	1/2	1/2	-	KEYWAY	#10-32	5/16	FINE
EFSC850	EFSC-850	5/8	3/8	11/64	3/16	1/4-28	3/16	FINE
EFSC860	EFSC-860	3/4	3/8	11/64	3/16	1/4-28	3/16	FINE
EFSC-SQUARE								
EFSC870	EFSC-870	1/2	3/8	-	#10-32	-	3/16	FINE
EFSC875	EFSC-875	1/2	1/2	-	#10-32	-	5/16	FINE



EFSC-ANGLE GRIP					
CAD FILE NAME	PART NUMBER	A	B	C	TOOTH PATTERN
EFSC1274	EFSC-127-4	9/16	3/8	#10-32	4-POINT
EFSC127410MM	EFSC-127-4-10MM	.394	3/8	#10-32	4-POINT
EFSC12710	EFSC-127-10	9/16	3/8	#10-32	FINE
EFSC1304	EFSC-130-4	9/16	3/8	#10-32	STRAIGHT
EFSC130210MM	EFSC-130-2-10MM	.394	3/8	#10-32	STRAIGHT
EFSC1455	EFSC-145-5	9/16	3/8	#10-32	STRAIGHT



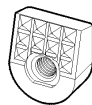
EFSC-127-4 SHOWN



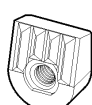
4 POINT



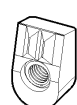
4 POINT
10 MM



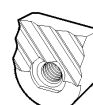
10 POINT



4 POINT
STRAIGHT



2 POINT
10 MM
STRAIGHT



5 POINT
ANGULAR

CAD Directory

Mach-Tool\Grippers

Note: The shortest standard components is given, you may "stretch" the unit to the desired length.