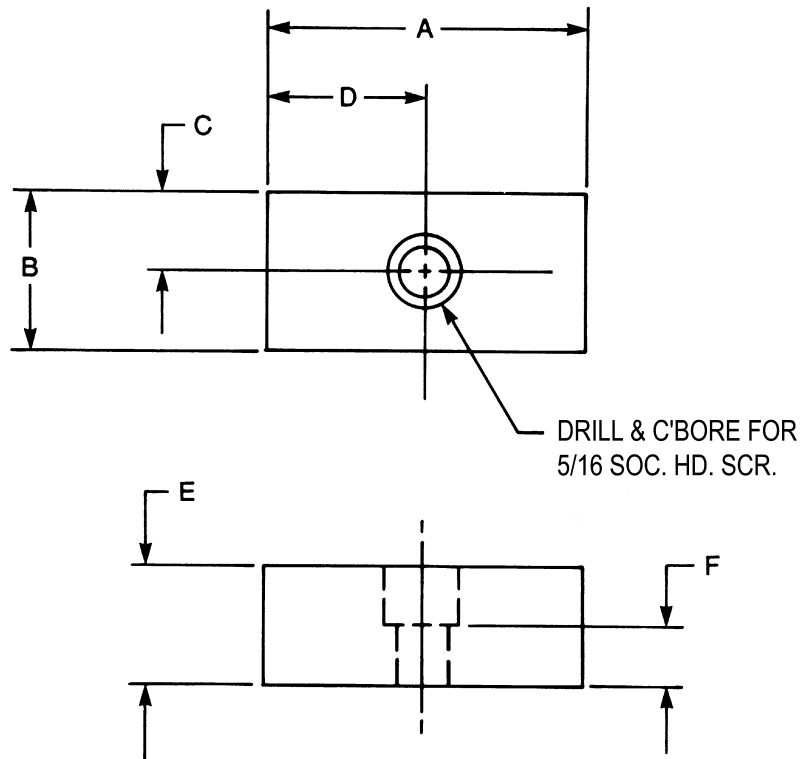


# Fixture Keys



CAD FILE NAME	PART NUMBER	A	B	C	D	E	F
E-428	E428	2.00	1.003 1.000	.500	1.00	.75	.38
	E428-2562	2.00	.999 .998	.500	1.00	.75	.38
	E428-4946	2.00	1.008/ 1.010	.500	1.00	.75	.38
E-429	E429	2.00	1.003 1.000	.500	1.00	.50	.12
	E429-2562	2.00	.999 .998	.500	1.00	.50	.12
	E429-4946	2.00	1.008/ 1.010	.500	1.00	.50	.12
E-430	E430	3.00	1.003 1.000	.500	1.50	.75	.38
	E430-2562	3.00	.999 .998	.500	1.50	.75	.38
	E430-4946	3.00	1.008/ 1.010	.500	1.50	.75	.38
E-431	E431	3.00	1.003 1.000	.500	1.50	1.00	.62
	E431-2562	3.00	.999 .998	.500	1.50	1.00	.62
	E431-4946	3.00	1.008/ 1.010	.500	1.50	1.00	.62

Material: Case Hardened Steel

# Adjusting Blocks

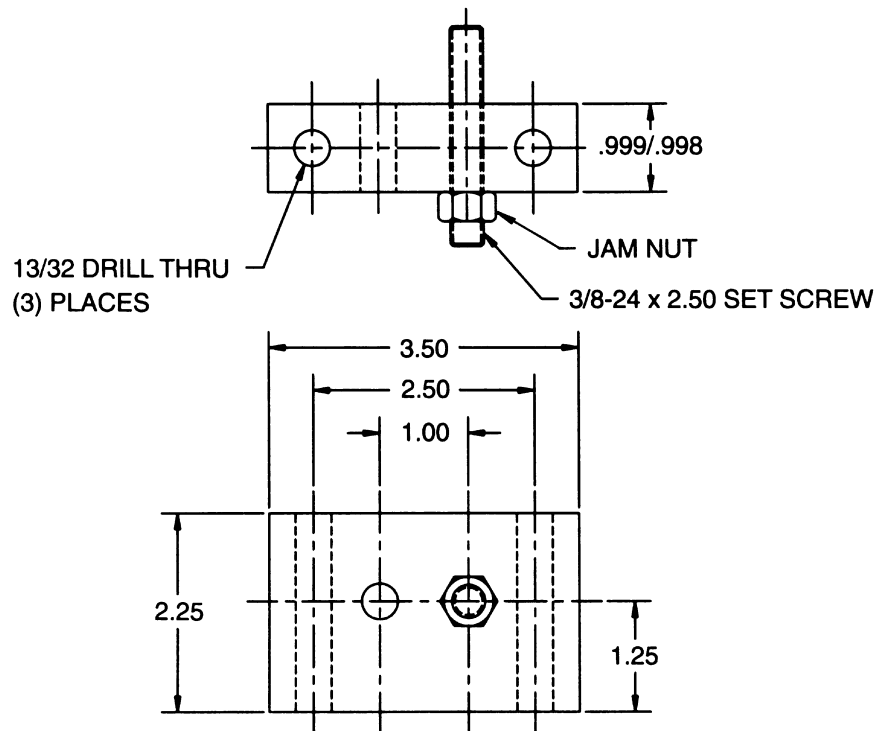


## DESIGN FEATURES

- Rugged Steel Construction
- Ground Width for Keying to Machine Base
- Adjust and Hold Down from One Unit
- Use Several Units for Multi Axis Adjustment
- Special Versions Available

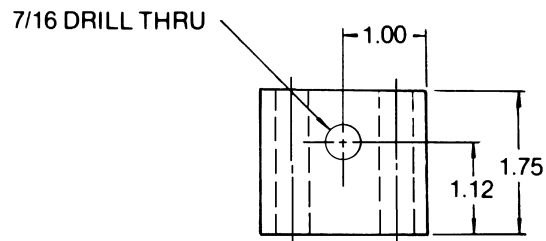
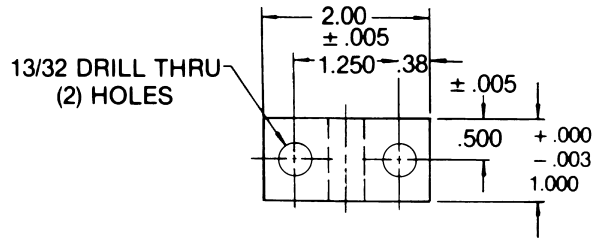
**CAD File Name E3006**

**Part No. E-3006**



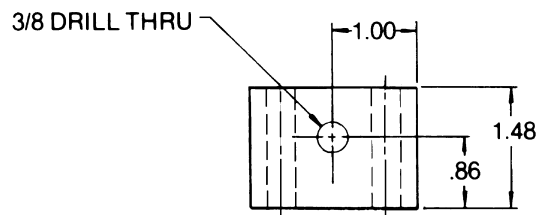
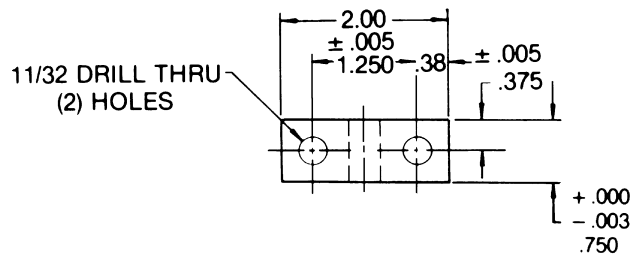
# Adjusting Blocks

**CAD File Name E425**  
**Part No. E425**



FINISH: BLACK OXIDE

**CAD File Name E426**  
**Part No. E426**



FINISH: BLACK OXIDE

**CAD File Name E427**  
**Part No. E427 Spacer**

