

# Switch Rods & Switch Dogs



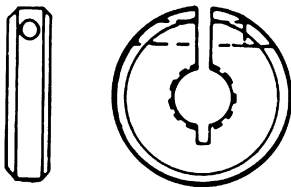
## Features:

- Round or Tapered Switch Dogs
- Variety of Sizes
- Split Design Clamping Screw Provided
- Black Oxide Finish
- Metric Sizes Available Upon Request

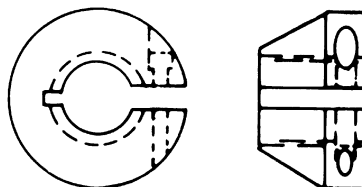


## Types

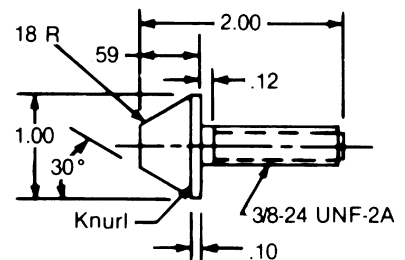
Round



Tapered



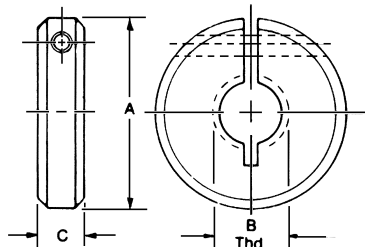
Push-Button Dog



Part No. E087

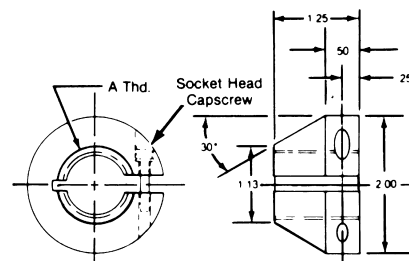
Both round and tapered E&E switch dogs are slotted and include a socket head capscrew to provide flexibility in positioning and locking the dogs in place on the threaded rod. This feature allows repeated changes in positioning without damage to the rod's threads. The grasping action of the thread itself holds the dog securely in place and eliminates the need for set screws or other destructive devices.

# Switch Dogs



## Round

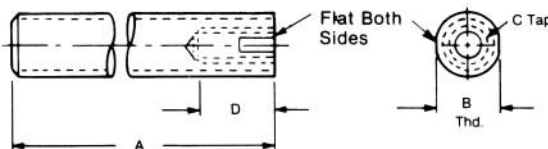
CAD FILE NAME	E069	E070	E071	E072	E073	E074	E075
<b>PART NUMBER</b>	<b>E069</b>	<b>E070</b>	<b>E071</b>	<b>E072</b>	<b>E073</b>	<b>E074</b>	<b>E075</b>
<b>A DIA.</b>	2.00	2.00	2.00	2.50	2.50	2.50	1.00
<b>B THD.</b>	7/16 - 20	1/2 - 20	5/8 - 18	3/4 - 16	1 - 14	1-1/2 - 12	5/16 - 24
<b>C WIDTH</b>	.62	.62	.62	.62	.62	.62	.38



## Tapered

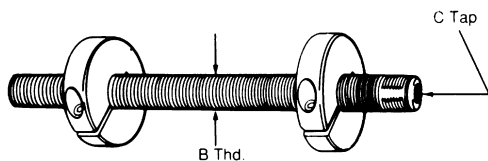
CAD FILE NAME	E093	E094	E095
<b>PART NUMBER</b>	<b>E093</b>	<b>E094</b>	<b>E095</b>
<b>A</b>	7/16 - 20	3/4 - 16	1 - 14

# Switch Rods



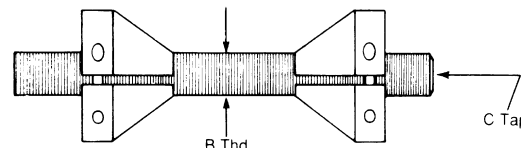
CAD FILE NAME	E078-6	E079-6	E080-6	E081-6	E082-6	E083-6	E084-6
<b>PART NUMBER</b>	<b>E078</b>	<b>E079</b>	<b>E080</b>	<b>E081</b>	<b>E082</b>	<b>E083</b>	<b>E084</b>
<b>A</b>	AVAILABLE IN 6", 8", 10", & 12" LENGTHS						
<b>B THD.</b>	5/16 - 24	7/16 - 20	1/2 - 20	5/8 - 18	3/4 - 16	1 - 14	1-1/2 - 12
<b>C TAP</b>	—	5/16 - 24	5/16 - 24	3/8 - 24	7/16 - 20	5/8 - 18	1 - 14
<b>D</b>	—	.63	.63	.75	.88	1.25	1.75
<b>D TAP DEPTH</b>	—	.63	.63	.75	.88	1.25	1.75

# Switch Assemblies



## With Conventional Switch Dogs

CAD FILE NAME	E999-6	E000-6	E003-6	E004-6	E005-6	E006-6	E007-6
<b>PART NUMBER</b>	<b>E999</b>	<b>E000</b>	<b>E003</b>	<b>E004</b>	<b>E005</b>	<b>E006</b>	<b>E007</b>
<b>ROD LENGTH</b>	AVAILABLE IN 6", 8", 10", & 12" LENGTHS						
<b>B THD</b>	5/16 - 24	7/16 - 20	1/2 - 20	5/8 - 18	3/4 - 16	1 - 14	1-1/2 - 12



## With Single Tapered Switch Dog (Slotted Mount)

CAD FILE NAME	E993-6	E994-6	E995-6
<b>PART NUMBER</b>	<b>E993</b>	<b>E994</b>	<b>E995</b>
<b>ROD LENGTH</b>	AVAILABLE IN 6", 8", 10", & 12" LENGTHS		
<b>B THD.</b>	7/16 - 20	3/4 - 16	1 - 14

CAD Directory  
Cylinder-ACC\Dogsrods

**"Stretch"**  
The shortest standard component is given. You may "Stretch" the unit to the desired length.