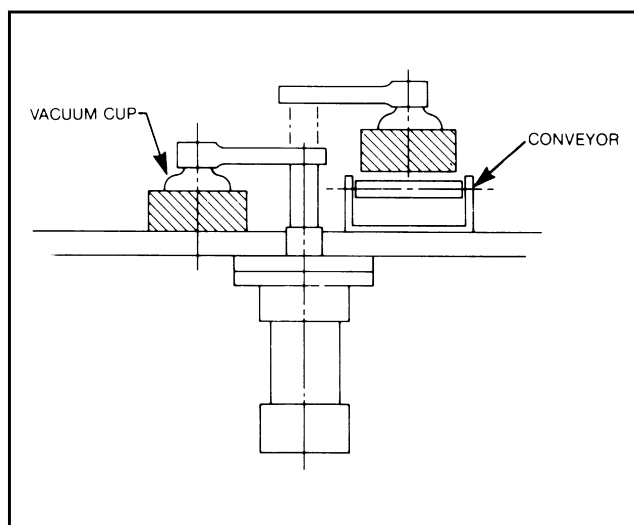


Internal Rota-Shaft for Air or Hydraulic Powered Cylinders



A full range of standard 1 1/2" to 3 1/4" bore J.I.C. double rod end cylinders incorporating the exclusive E&E helix within the cylinder to provide 90° right- or left-hand shaft rotation.



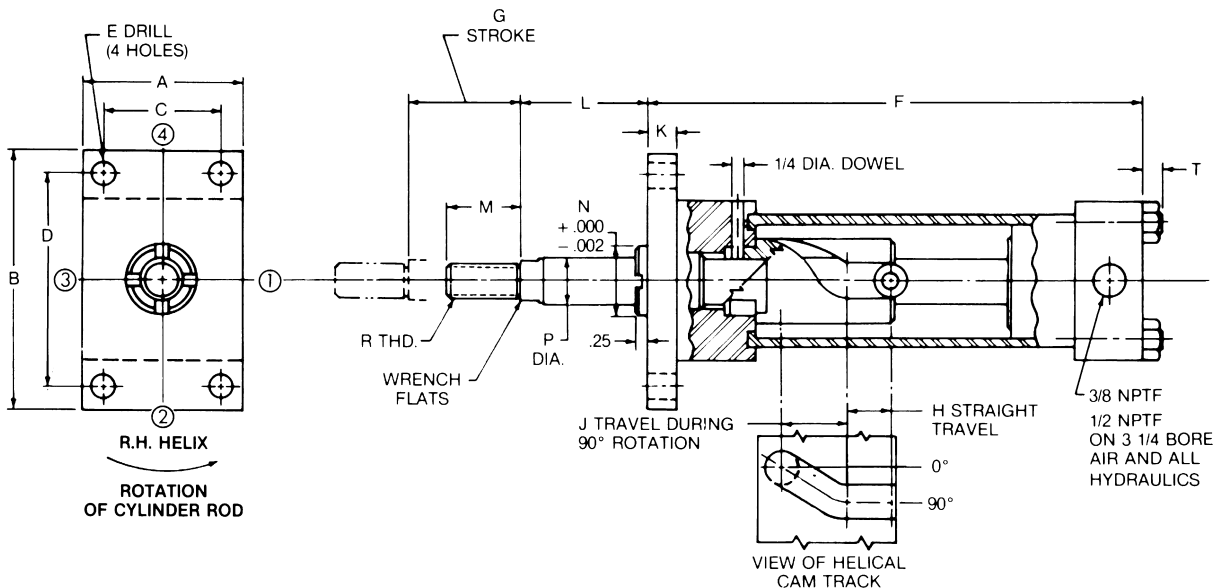
INTERNAL BODY ROTA-SHAFT

DESIGN FEATURES

- Unit totally self-contained prevent contaminants from entering helix
- Additional rotational, straight travel and bores available on special order basis
- Entire clamp is designed around a standard J.I.C. cylinder configuration
- Air or hydraulic available
- Rod sizes are 5/8" or 1" as needed
- Equipped with standard threaded end for ease of mounting clamping details

APPLICATION

Typically used in pull-to-clamp situations where greater clamping forces are required. Also can be used in parts transfer applications.



RIGHT HAND ROTATION SHOWN, LEFT HAND ALSO STANDARD.

| AIR POWERED | | | | | | | | | | | | | | | | | | |
|---------------|--------------|--------------------|------------|------|------|------|-----|-------|------|------|------|-----|------|------|-------|------|---------|-----|
| CAD FILE NAME | PART NUMBER | CYL. BORE DIAMETER | DIMENSIONS | | | | | | | | | | | | | | | |
| | | | A | B | C | D | E | F | G | H | J | K | L | M | N | P | R | T |
| E58151 | E58151-(R/L) | 1-1/2 | 2.00 | 3.38 | 1.43 | 2.75 | .32 | 8.12 | 1.81 | 1.00 | .81 | .38 | 2.25 | 1.25 | 1.124 | .625 | 7/16-20 | .25 |
| E58201 | E58201-(R/L) | 2.0 | 2.50 | 4.12 | 1.84 | 3.38 | .38 | 8.12 | 1.81 | 1.00 | .81 | .38 | 2.25 | 1.25 | 1.124 | .625 | 7/16-20 | .32 |
| E58251 | E58251-(R/L) | 2-1/2 | 3.00 | 4.62 | 2.19 | 3.88 | .38 | 8.25 | 1.81 | 1.00 | .81 | .38 | 2.62 | 1.25 | 1.124 | .625 | 7/16-20 | .32 |
| E11326 | E11326-(R/L) | 3-1/4 | 3.75 | 5.50 | 2.76 | 4.69 | .44 | 10.47 | 2.50 | 1.00 | 1.50 | .62 | 3.25 | 1.62 | 1.499 | 1.00 | 3/4-16 | .38 |

MAXIMUM RECOMMENDED OPERATING PRESSURE – 250 PSI AIR – 500 PSI HYDRAULIC
 MAXIMUM VELOCITY – 120 IN./MIN.

| HYDRAULIC POWERED | | | | | | | | | | | | | | | | | | |
|-------------------|--------------|--------------------|------------|------|------|------|-----|-------|------|------|------|-----|------|------|-------|------|---------|-----|
| CAD FILE NAME | PART NUMBER | CYL. BORE DIAMETER | DIMENSIONS | | | | | | | | | | | | | | | |
| | | | A | B | C | D | E | F | G | H | J | K | L | M | N | P | R | T |
| E48151 | E48151-(R/L) | 1-1/2 | 2.50 | 4.25 | 1.63 | 3.44 | .44 | 9.12 | 1.81 | 1.00 | .81 | .38 | 2.25 | 1.25 | 1.124 | .625 | 7/16-20 | .38 |
| E10201 | E10201-(R/L) | 2.0 | 3.00 | 5.12 | 2.05 | 4.12 | .56 | 10.85 | 2.50 | 1.00 | 1.50 | .62 | 2.82 | 1.62 | 1.499 | 1.00 | 3/4-16 | .44 |
| E10251 | E10251-(R/L) | 2-1/2 | 3.50 | 5.62 | 2.55 | 4.62 | .56 | 10.97 | 2.50 | 1.00 | 1.50 | .62 | 2.82 | 1.62 | 1.499 | 1.00 | 3/4-16 | .44 |

MAXIMUM RECOMMENDED OPERATING PRESSURE-1500 PSI HYDRAULIC
 MAXIMUM VELOCITY – 120 IN./MIN.

SPECIFY: -R (RIGHT-HAND)
 -L (LEFT-HAND)