

Non-Powered Rota-Shaft Clamps For J.I.C. Flange Mount Cylinder

MOST VERSATILE CLAMP ON THE MARKET

Mounts to standard J.I.C. flange mount cylinder
One standard clamp will accommodate a wide range of applications with varying degrees of rotation, up to 180°, simply by altering cylinder stroke

Clamping rod is independent of cylinder rod



DESIGN FEATURES

Precision machined cam track

Housing hardened and ground

Precision cam roller hardened and ground

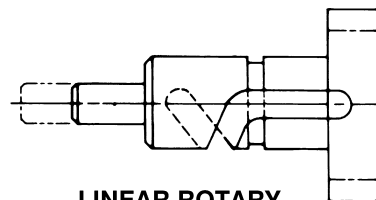
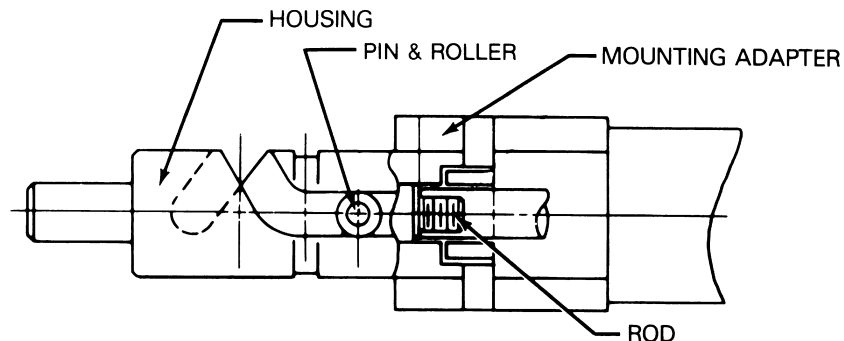
High alloy machineable steel shaft

Housing groove provides 360° access for easy lubrication

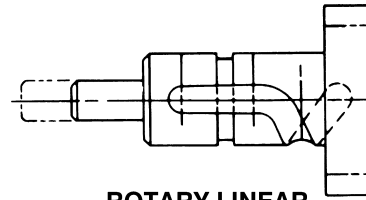
Threaded shaft provides for easy attachment

Opposite shaft end blank for easy customer modification

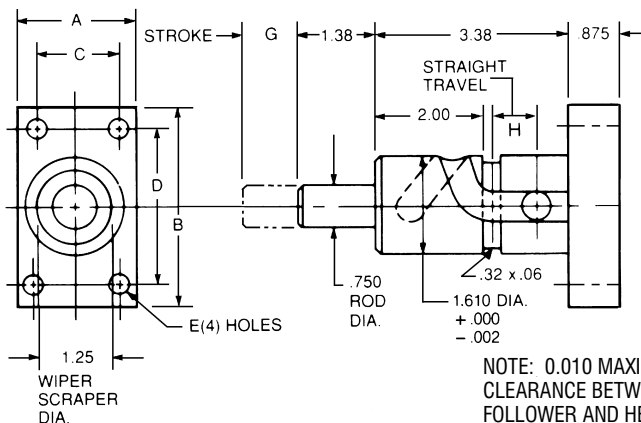
Black oxide finish



LINEAR ROTARY
MODELS: EP-750
EP-112



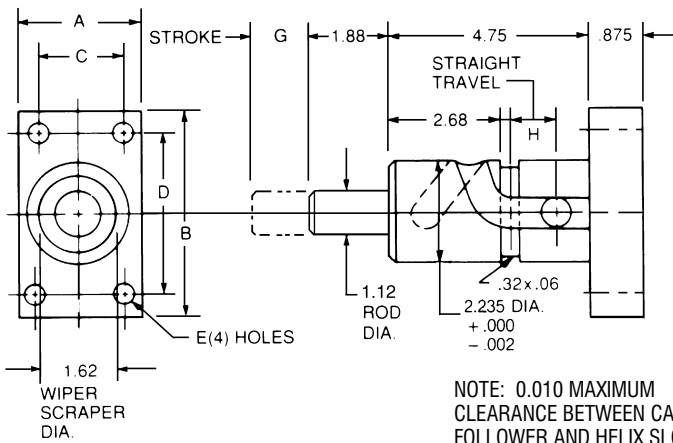
ROTARY LINEAR
MODELS: EP-057
EP-211



EP-750 & EP-057 SERIES

(LINEAR/ROTARY SHOWN)

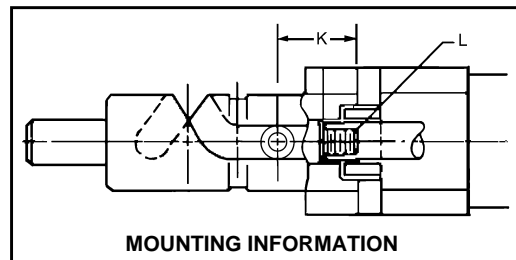
This series is available with 0° to 180° rotation, determined by cylinder stroke or rod travel. Linear/Rotary or Rotary/Linear standard.



EP-112 & EP-211 SERIES

(LINEAR/ROTARY SHOWN)

This series is available with 0° to 180° rotation, determined by cylinder stroke or rod travel. Linear/Rotary or Rotary/Linear standard.



CAD FILE NAME	PART NUMBER	CYLINDER BORE (IN.)	DIMENSIONS								
			A	B	C	D	E	G	H	K	L
EP75015	EP-750-15 (R/L)	1-1/2	2.0	3.38	1.43	2.75	.32	*	*	1.370	7/16-20
EP75020	EP-750-20 (R/L)	2.0	2.50	4.12	1.84	3.38	.38	*	*	1.370	7/16-20
EP75025	EP-750-25 (R/L)	2-1/2	3.0	4.62	2.19	3.88	.38	*	*	1.370	7/16-20
EP11225	EP-112-25 (R/L)	2-1/2	3.0	4.62	2.19	3.88	.38	*	*	1.810	3/4-16
EP11232	EP-112-32 (R/L)	3-1/4	3.75	5.50	2.76	4.68	.44	*	*	1.810	3/4-16
EP05715	EP-057-15 (R/L)	1-1/2	2.0	3.38	1.43	2.75	.32	*	*	1.370	7/16-20
EP05720	EP-057-20 (R/L)	2.0	2.50	4.12	1.84	3.38	.38	*	*	1.370	7/16-20
EP05725	EP-057-25 (R/L)	2-1/2	3.0	4.62	2.19	3.88	.38	*	*	1.370	7/16-20
EP21125	EP-211-25 (R/L)	2-1/2	3.0	4.62	2.19	3.88	.38	*	*	1.810	3/4-16
EP21132	EP-211-32 (R/L)	3-1/4	3.75	5.50	2.76	4.68	.44	*	*	1.810	3/4-16

* REFER TO COMPARABLE UNIT WITH CYLINDER FOR CYLINDER STROKE/ROTATION/STRAIGHT TRAVEL RELATIONSHIP

ORDERING INFORMATION

EP 750 15 (R/L)
 Powered Series Cylinder Bore Rotation
 R = Right
 L = Left

CAD Directory
 Linear-Rotary\Nonpower